

1

Geometric & Corinthian Pottery



Greek, ca. 700 BCE

Oinochoe (pitcher)

Friezes of riders, warriors, and birds with geometric patterns

Red slip painted on earthenware; Geometric style

Museum Purchase through the Harlan E. Moore Charitable Trust Fund

1972-13-6



Greek, ca. 700 BCE

Oinochoe (pitcher)

Friezes of diamonds and dots, stars and swastikas (sun symbols)

Red slip painted on earthenware; Geometric style

Museum Purchase through the Harlan E. Moore Charitable Trust Fund

1972-13-4

Geometric & Corinthian Pottery (cont.)

Greek, Corinthian, ca. 580 BCE

Kotyle (stemless drinking cup)



Banded decoration with aquatic birds, panthers, and goats

Black and red slip painted on earthenware; “Wild Style”

Museum Purchase through the Harlan E. Moore Charitable Trust Fund

1970-9-1

Greek, Corinthian, ca. 600 BCE

Olpe (pitcher)



Banded decoration of swans, goats, panthers, boars, and sirens

Black, red, and white slip painted on earthenware; Moore Painter

Museum Purchase through the Harlan E. Moore Charitable Trust Fund

1970-9-2

3

Geometric & Corinthian Pottery (cont.)



Greek, Corinthian, ca. 600–590 BCE

Oinochoe (pitcher)

Banded decoration of owl, sphinx, aquatic bird, panthers, and lions

Black, red, and white slip painted on earthenware

Museum Purchase through the Harlan E. Moore Charitable Trust Fund

1970-9-4

4

Greek Black-figure Pottery



Greek, Attic, ca. 550 BCE

Amphora (storage jar)

Equestrian scenes

Black-figure technique; Pointed Nose Painter (Tyrrhenian group)

Museum Purchase through the Harlan E. Moore Charitable Trust Fund

1970-9-3

Greek, Attic, ca. 530–520 BCE

Kylix (stemmed drinking cup)



Exterior: Apotropaic eyes and Athena battling Giants

Interior medallion: Triton

Black-figure technique on earthenware; after Exekias

Museum Purchase through the Harlan E. Moore Charitable Trust Fund

1970-8-1

5

Greek Black-figure Pottery (cont.)



Greek, Attic, ca. 525–500 BCE

Neck Amphora (storage jar)

Two scenes of a youth driving four horses and apotropaic eyes

Black-figure technique with added white on earthenware;

Antimenes Painter

Museum Purchase through the Harlan E. Moore Charitable Trust Fund

1970-8-2



Greek, Attic, ca. 490 BCE

Lekythos (oil flask)

Kaineus fighting two centaurs

White-ground technique on earthenware; Athena Painter

Museum Purchase through the Harlan E. Moore Charitable Trust Fund

1972-13-1

6

Greek Black-figure Pottery (cont.)



Greek, Attic, ca. 500–490 BCE

Alabastron (cosmetic oil flask)

Dancing maenads; nonsense inscriptions

White-ground technique on earthenware; Sappho Painter

Museum Purchase through the Harlan E. Moore Charitable Trust Fund

1972-13-2



Greek, Attic, ca. 500 BCE

Alabastron (cosmetic oil flask)

African warrior

White-ground technique on earthenware

Museum Purchase through the Harlan E. Moore Charitable Trust Fund

1972-13-3

Greek Red-figure Pottery

Greek, Attic, ca. 475–450 BCE

Hydria (water jug)



Herakles leaving the Garden of the Hesperides

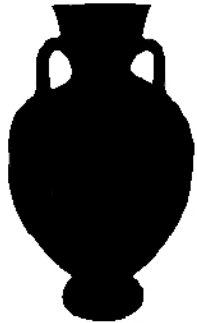
Red-figure technique on earthenware; Syracuse Painter

Museum Purchase through the Harlan E. Moore Charitable Trust Fund

1970-8-4

Greek, South Italian, Lucanian, ca. 430–400 BCE

Amphora (storage jar)



Departure of warriors; conversing youths

Red-figure technique on earthenware; Amykos Painter

Museum Purchase through the Harlan E. Moore Charitable Trust Fund

1970-7-3

8

Greek Red-figure Pottery (cont.)



Greek, Attic, ca. 500 BCE

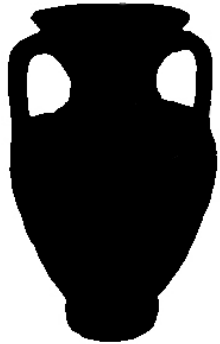
Hydria (water jug)

Athena battling giants

Red-figure technique on earthenware; Berlin Painter Workshop

Museum Purchase through the Harlan E. Moore Charitable Trust Fund

1970-7-1



Greek, Attic, ca. 465 BCE

Neck Amphora (storage jar)

Musician playing kithara and singing with dancer

Red-figure technique on earthenware; Pan Painter

Museum Purchase through the Harlan E. Moore Charitable Trust Fund

1970-8-5

Greek Red-figure Pottery (cont.)

Greek, Attic, ca. 490–480 BCE



Column Krater (bowl for mixing wine and water)

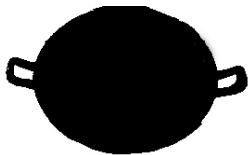
A *symposion* (drinking party) with feasting and dancing

Red-figure technique on earthenware; close to the painter Myson

Museum Purchase through the Harlan E. Moore Charitable Trust Fund

1970-8-3

Greek, Attic, ca. 485 BCE Kylix (stemmed cup)



Exterior: Youths drinking, dancing, and playing instruments; inscription

“handsome boy.” Interior: Crowned athlete with sponges, an oil or perfume container (*aryballos*), a scraper (*strigil*) and walking stick;

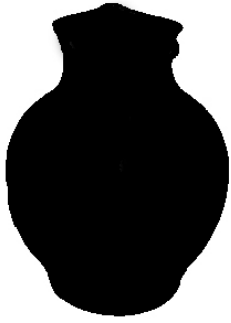
inscription “Aristarchos is handsome.” Red-figure technique on

earthenware; Antiphon Painter. Museum Purchase through the Harlan

E. Moore Charitable Trust Fund, 1970-8-7

10

Greek Red-figure Pottery (cont.)



Greek, Attic, ca. 475 BCE

Chous (jug)

Piper and reveler

Red-figure technique on earthenware; Painter of Florence 4021

Museum Purchase through the Harlan E. Moore Charitable Trust Fund

1970-8-6

South Italian and Ancient Near East



Greek, South Italian, Apulian, ca. 360 BCE

Lebes Gamikos (nuptial jar)

Eros flying between a seated woman and standing youth; the bridal couple with gifts. Red-figure technique with white paint on earthenware; close to Painter of Athens 1714

Museum Purchase through the Harlan E. Moore Charitable Trust Fund

1970-9-5

South Italian and Ancient Near East (cont.)



Parthian, 800–700 BCE

Lion

Terracotta

Museum Purchase through the Harlan E. Moore Charitable Trust Fund

1976-21-1



Greek, Attic or South Italian, Sicilian, ca. 440–400 BCE

Bell Krater (bowl for mixing wine and water)

Hermes and seated goddess with two attendants; travelers
greeting each other

Red-figure technique on earthenware; Agora P. Painter (?) or
Sicilian imitator

Museum Purchase through the Harlan E. Moore Charitable Trust Fund

1970-7-2

12
South Italian and Ancient Near East (cont.)

Parthian, 800–700 BCE

Not yet on
view*

Black effigy pottery vessel

Grayware

Museum Purchase through the Harlan E. Moore Charitable Trust Fund
1976-8-1



Urartian, 800–700 BCE

Black effigy pottery vessel

Grayware

Museum Purchase through the Harlan E. Moore Charitable Trust Fund
1976-9-1

13

Other Storage & Ancient Glass



Greek, 600–300 BCE

Amphoriskos (perfume bottle)

Glass, core-formed

Museum Purchase through the Harlan E. Moore Charitable Trust Fund

1980-9-1



Mesopotamian, 600–300 BCE

Kohl tube

Glass, core-formed

Museum Purchase through the Harlan E. Moore Charitable Trust Fund

1980-9-3

Other Storage & Ancient Glass (cont.)



Roman, Syro-Palestinian, 100–299 CE

Bottle

Glass, free-blown

Gift of Harriet K. Brooks, 1978-13-1



Roman, Syria, 299–200 BCE

Sprinkler Flask (perfumed oil container), Glass

Museum Purchase through the Harlan E. Moore Charitable Trust Fund

1980-9-5



Roman, Syria, 0–200 CE

Spheriod bottle (ointment container)

Glass, free-blown, with marvered thin spiral thread

Museum Purchase through the Harlan E. Moore Charitable Trust Fund

1980-9-4

15

Other Storage & Ancient Glass (cont.)



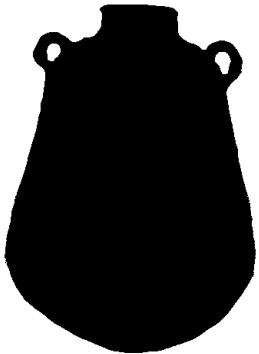
Roman, Syria or Palestine, 0–200 CE

Cosmetic bottle (*unguentarium*)

Glass, free-blown

Gift of Mr. Peter Redgrove

1981-6-1



Roman, Mediterranean, 100–400 CE

Storage and Transportation Amphora

Earthenware

Museum Purchase through the Harlan E. Moore Charitable Trust Fund

1987-20-1